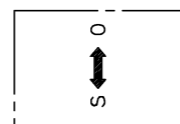


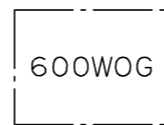


In SIZES 1/4 up to 2

HANDLE MARKING

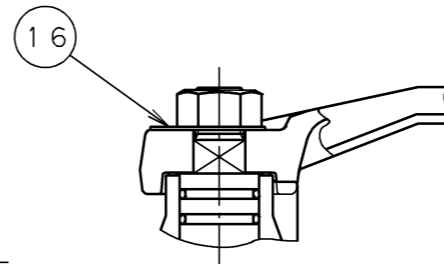


In SIZES 2 1/2 & 3

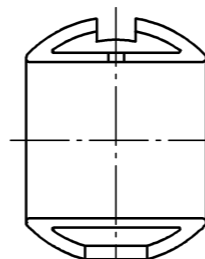
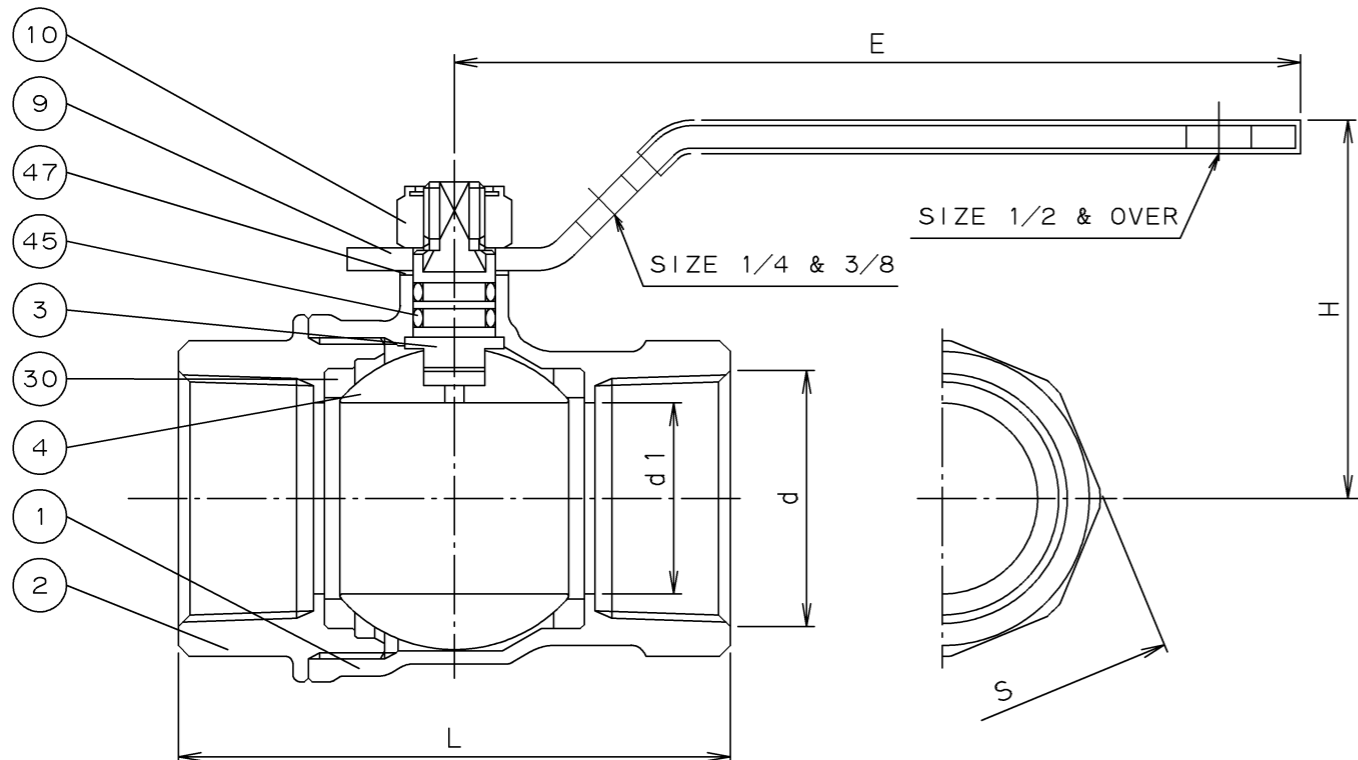


In SIZES 2 1/2 & 3

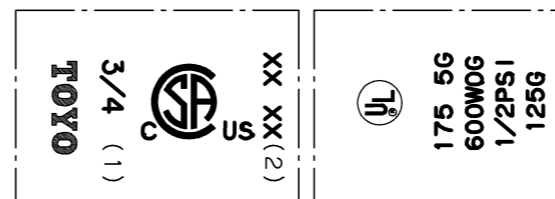
PLATE MARKING



SIZES 2 1/2 & 3

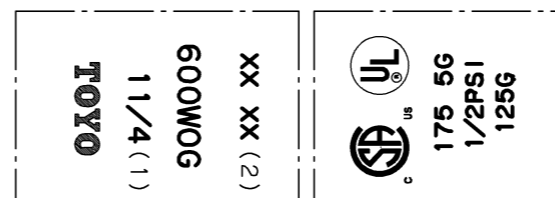


In SIZES 1 1/4 & OVER
BALL SHAPE



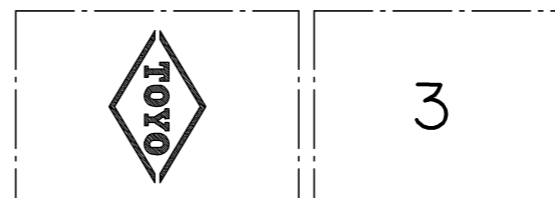
ONE SIDE THE OTHER SIDE

In SIZES 1/4 up to 1 1/4



ONE SIDE THE OTHER SIDE

In SIZES 1 1/2 up to 2



ONE SIDE THE OTHER SIDE

In SIZES 2 1/2 & 3

BODY MARKING

DIMENSIONS

UNIT : mm

SIZE		d	d1	H	L	E	S
A	B						
8	1/4	NPT 1/4	10	37	42	70	20
10	3/8	NPT 3/8	10	37	42	70	22
15	1/2	NPT 1/2	15	40	53	80	26
20	3/4	NPT 3/4	20	43	60	80	32
25	1	NPT 1	25	50	72	110	39
32	1 1/4	NPT 1 1/4	32	55	84	110	48
40	1 1/2	NPT 1 1/2	40	64	92	150	55
50	2	NPT 2	50	72	110	150	68
65	2 1/2	NPT 2 1/2	65	100	138	200	84
80	3	NPT 3	76	112.5	167	300	99

NOTE

- (1) VALVE SIZE IDENTIFICATION
- (2) DATE CODE MARKING

- *1: Ni PLATING.
- *2: Cr PLATING.
- *3: ZINC PLATING & PLASTIC COVER.
- *4: ZINC PLATING.

No.	PART	MATERIAL (ASTM)
47	THRUST WASHER	R-PTFE SIZE 2 1/2, 3 PBT SIZE 1/4~2
45	O-RING	FKM
30	BALL SEAT	PTFE
16	PLATE	ALUMINUM SIZE 2 1/2, 3
10	HANDLE NUT	CARBON STEEL *4
9	LEVER HANDLE	DUCTILE IRON SIZE 2 1/2, 3 CARBON STEEL *3 SIZE 1/4~2
4	BALL	FORGED BRASS *2 B283-C37700
3	STEM	BRASS ROD *1 B16
2	CAP	FORGED BRASS B283-C37700
1	BODY	FORGED BRASS B283-C37700

No.	PART	MATERIAL (ASTM)
FACE TO FACE OR END TO END MAKER'S STANDARD		<p>600WOG FORGED BRASS SCREWED END BALL VALVE FULL BORE TYPE</p>
END CONNECTION ASME B1.20.1		
WALL THICKNESS MAKER'S STANDARD		
PRESSURE TEST MAKER'S STANDARD		

APP'D	K.Kobayashi	FIGURE	PRODUCT CODE
CHK'D	H.Fuseya	RP-NK	5044A
CHK'D	M.Mochizuki	NPT	
PREP'D	K.Kohama	DRAWING No.	
DATE	JUL.31.'15	T1211S020	
		MARK	DATE BY



Toyo Valve Co., Ltd.