

KY-4, 4N Type Strainer

Cast iron-Cast bronze Screwed

Y-shaped, screwed strainer made of cast iron or bronze, with compact body, large filtering area, is ideal to use in the pipeline where automatic valves are installed.

SPECIFICATIONS

Body material	Cast iron		Cast bronze	
Model name	KY-4		KY-4N	
Code name	KY4-G2	KY4-G □	KY4N-J2	KY4N-J □
	※ 1, 3 or 4 for mesh is required in □.			
Size	15~65(1/2"~2 1/2")		15~50(1/2"~2")	
Applicable fluid	Steam, gases & liquids			
Applicable pressure	Max. 1.0MPa			
Applicable temperature	Max. 184°C*1.			
End connection	Screwed JIS Rc			
Materials	Body(Cast iron), Net(Stainless steel) Cover(Forged brass or cast iron)		Body, Cover(Cast bronze) Net(Stainless steel)	
Mesh	60 Mesh	※ 1:40 Mesh 3:80 Mesh 4:100 Mesh	60 Mesh	※ 1:40 Mesh 3:80 Mesh 4:100 Mesh
Pressure test	Hydraulic 1.5MPa		Hydraulic 1.75MPa	

* 1. Applicable temperature Max. 220°C is available upon your request.

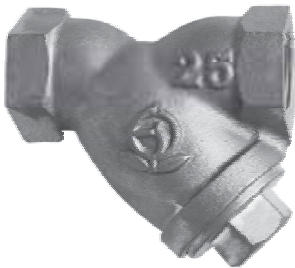
* 2. Punched plate without lining is available. (Size 15~40mm: φ 1.3 P2.5. And size 50 and 65mm: φ 2.5 P4)

DIMENSIONS

(mm)

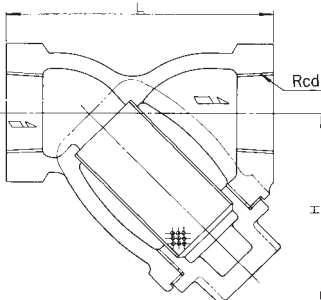
Size	L	H	d	Mass(kg)
15(1/2")	75	55(53)	1/2"	0.6 (0.4)
20(3/4")	90	67(64)	3/4"	0.9 (0.6)
25(1")	110	78(77)	1"	1.4 (1)
32(1 1/4")	135	97(95)	1 1/4"	2.3 (1.7)
40(1 1/2")	150	112(109)	1 1/2"	3.5 (2.5)
50(2")	170	125(123)	2"	4.7 (3.7)
65(2 1/2")	200	145	2 1/2"	7.3

Figures in () are for KY-4N Type.

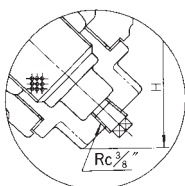


KY-4 Type

CONSTRUCTION (KY-4 Type)

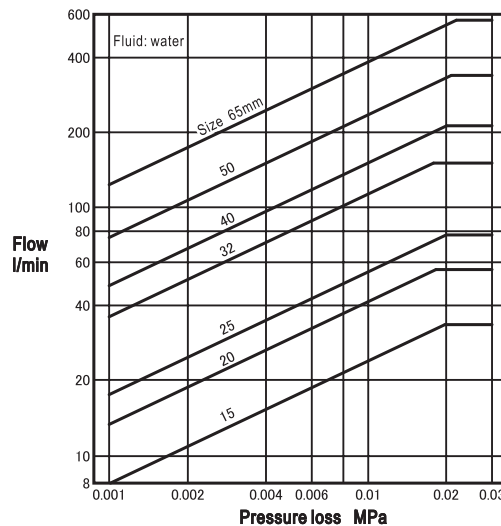


The structure of KY-4N is slightly different.



Size 50mm & 65mm

PRESSURE LOSS CHART (punch hole (punch plate))



Note: The pressure loss for each mesh number can be calculated by multiplying pressure loss determined using the above chart and a multiplier listed below.

MULTIPLIER LIST

Mesh	Multiplier
40	1.08
60	1.12
80	1.16
100	1.20

* Refer to page 185 for mesh data.